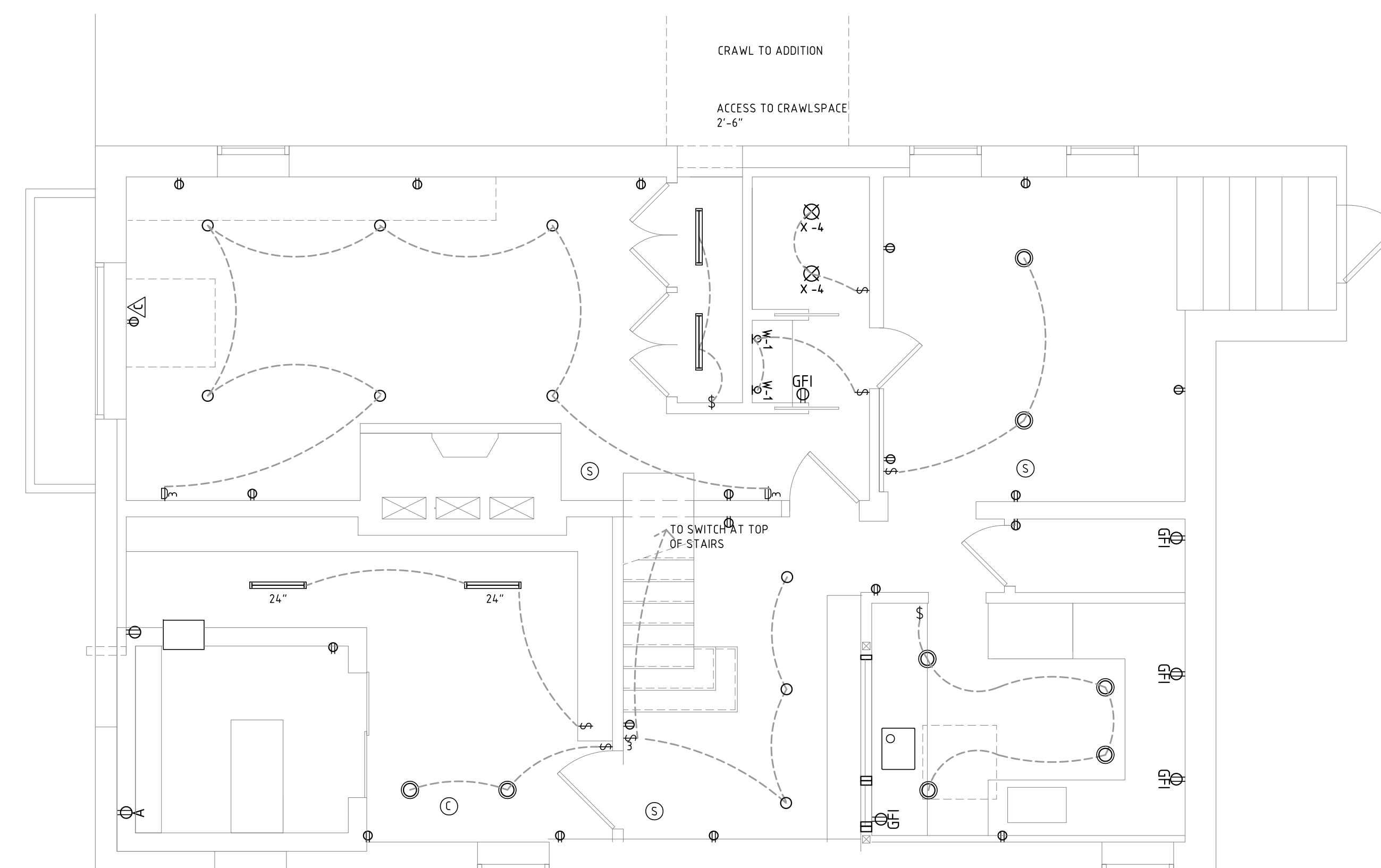


CONSULTANTS:

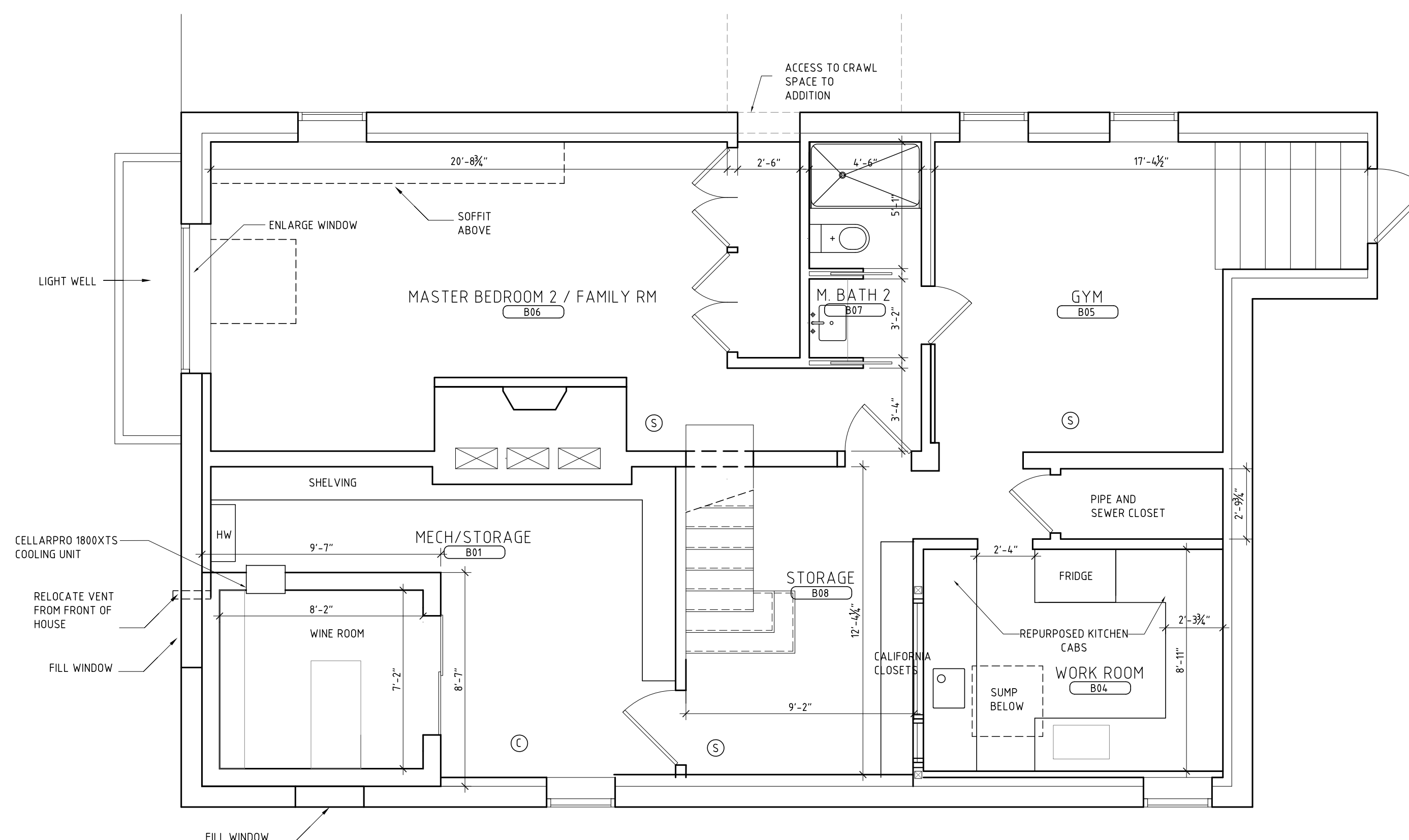
STRUCTURAL ENGINEER:  
SMYTHSON GUMPERT & HESER  
41 SECON STREET  
BUILDING 1, SUITE 600  
WALTHAM, MA 02453

tel: 781.907.9000  
fax: 781.907.9009  
www.sgh.com

SURVEYOR:  
ASH ENGINEERING  
166 WATER STREET  
STROUPTON, MA



**2 BASEMENT RCP**  
1/4" = 1'



**1 BASEMENT FLOOR PLAN**  
1/4" = 1'

LIGHT FIXTURES

FIXTURE	MANUF.	MODEL #	FINISH	BULB
○ RECESSED - 4"	WAC	R-420	WHITE	R20-50w
○ RECESSED - 6"	GENERIC			
○ RECESSED MINI				
[P-1] PENDANT	TBD			
[P-2] PENDANT	TBD			
W-1 WALL MTD. LIGHT	TBD			
X-1 LANDSCAPE UPLIGHT	TBD			
X-2 EXTERIOR LIGHT	TBD			
X-3 EXTERIOR LIGHT	TBD			
EXTERIOR DOWNLIGHT	TBD			
● LOW-VOLT RECESSED	WAC	HR-411	WHITE	50w MR-16
FLUORESCENT STRIP LIGHT W/ PLASTIC COVER	GENERIC		WHITE	WARM WHITE - SEE DWGS. FOR LENGTHS
+ LOW-VOLT. PUCK-LIGHT	WAC		WHITE	

DEVICES / EQUIPMENT

- ⊕ DUPLEX OUTLET
- ⊕ DUPLEX OUTLET - EXTERIOR GFI W/ COVER
- ⊕ QUAD. OUTLET
- ⊕ QUAD. OUTLET - UNDERCOUNTER
- ⊕ APPLIANCE OUTLET
- \$ LUTRON 'DIVA' SWITCH - SEE PLAN FOR TYPE
- ⊕ LUTRON 'DIVA' DIMMER
- ⊕ DATA/VOICE JACK
- ⊕ CABLE TV JACK
- ⊕ BATHROOM EXHAUST FAN
- ⊕ PHOTOCELL
- ⊕ MOTION DETECTOR
- ⊕ PHOTOCELL W/ MOTION DETECTOR
- ⊕ SMOKE DETECTOR
- ⊕ HEAT DETECTOR
- ⊕ CARBON MONOXIDE
- ⊕ THERMOSTAT
- ⊕ ELEC. SUBPANEL
- MAIN TRUNK
- BRANCH DUCT
- ⊕ DIFFUSER

NOTES

1. COORD. ALL APPLIANCE OUTLETS W/ EQUIPMENT
2. SUBSTITUTIONS TO BE SUBMITTED TO ARCHITECT AND/OR OWNER FOR APPROVAL
3. CABLE OUTLETS MUST ALWAYS BE LOCATED IN CLOSE PROXIMITY TO DUPLEX OUTLET.
4. ALL PHOTOCELL / MOTION SENSOR LOCATIONS ARE TO BE DETERMINED IN THE FIELD FOR EFFECTIVENESS; DRAWINGS SHOW SUGGESTED LOCATIONS ONLY.
5. ALL LANDSCAPE LIGHTING TO BE COORDINATED W/ LANDSCAPE DESIGN
6. ARROWS FROM HVAC MAIN TRUNKS SHOW DIRECTION OF BRANCH DUCTS ONLY; EXACT NO. & LOC. TO BE COORD. IN BY LICENSED HVAC CONTRACTOR.
7. ALL EXPOSED CONDUITS & DUCTWORK TO BE OF FINISHED QUALITY - CONTRACTOR TO SUBMIT SAMPLE. PAINT PER ROOM SCHEDULES.
8. ELEC. RECEPTACLES @ CONC. WALLS IN GARAGE & BASEMENT TO HAVE EXPOSED MTL. CONDUIT & J-BOX U.O.N.
9. FINAL LOC'S. & QUANTITY OF FLOOR OUTLETS TO BE COORDINATED W/ OWNER'S FURNITURE LAYOUT PLAN
10. FINAL ELECTRICAL & MECHANICAL WORK BY LICENSED CONTRACTORS IN ACCORDANCE W/ MASS. ELEC. CODE (527 CMR 12.001 & MASS. HVAC CODE (780 CMR 3614).
11. ALL ELEC., TEL., DSL, CABLE CONNECTIONS TO HOUSE THRU UNDERGROUND CONDUITS - ADHERE TO ALL LOCAL PERMITTING PROCESSES & CODES.
12. OUTLETS/CONNECTIONS TO APPLIANCES/EQUIP. SHOWN SCHEMATICALLY - REFER TO MANUF. SPEC'S. FOR ALL OUTLETS AND/OR ELEC./GAS CONNECTIONS TO APPLIANCES & EQUIP.
13. COORDINATE WALL LIGHTING AND KITCHEN ELECTRIC WITH SIEMATIC.
14. EXISTING PLUGS TO REMAIN UNLESS OTHERWISE NOTED
15. ALL GFI OUTLETS OVER COUNTERS UNLESS OTHERWISE NOTED.

**3 RCP LEGEND & NOTES**  
NTS

PROJECT:  
Travers-Smith Residence

PROJECT ADDRESS:  
119 PARK AVENUE  
ARLINGTON, MA 02476

DWG TITLE:

BASEMENT PLAN & RCP

SEAL & SIGNATURE:

DATE: 07 OCTOBER 2011

PROJECT No.: 1012

DWG BY: WW,BB,CC,LM,SC,JC

CHK BY: JH

DWG No.:

**A-101**

DOB ID No.: PAGE No.: