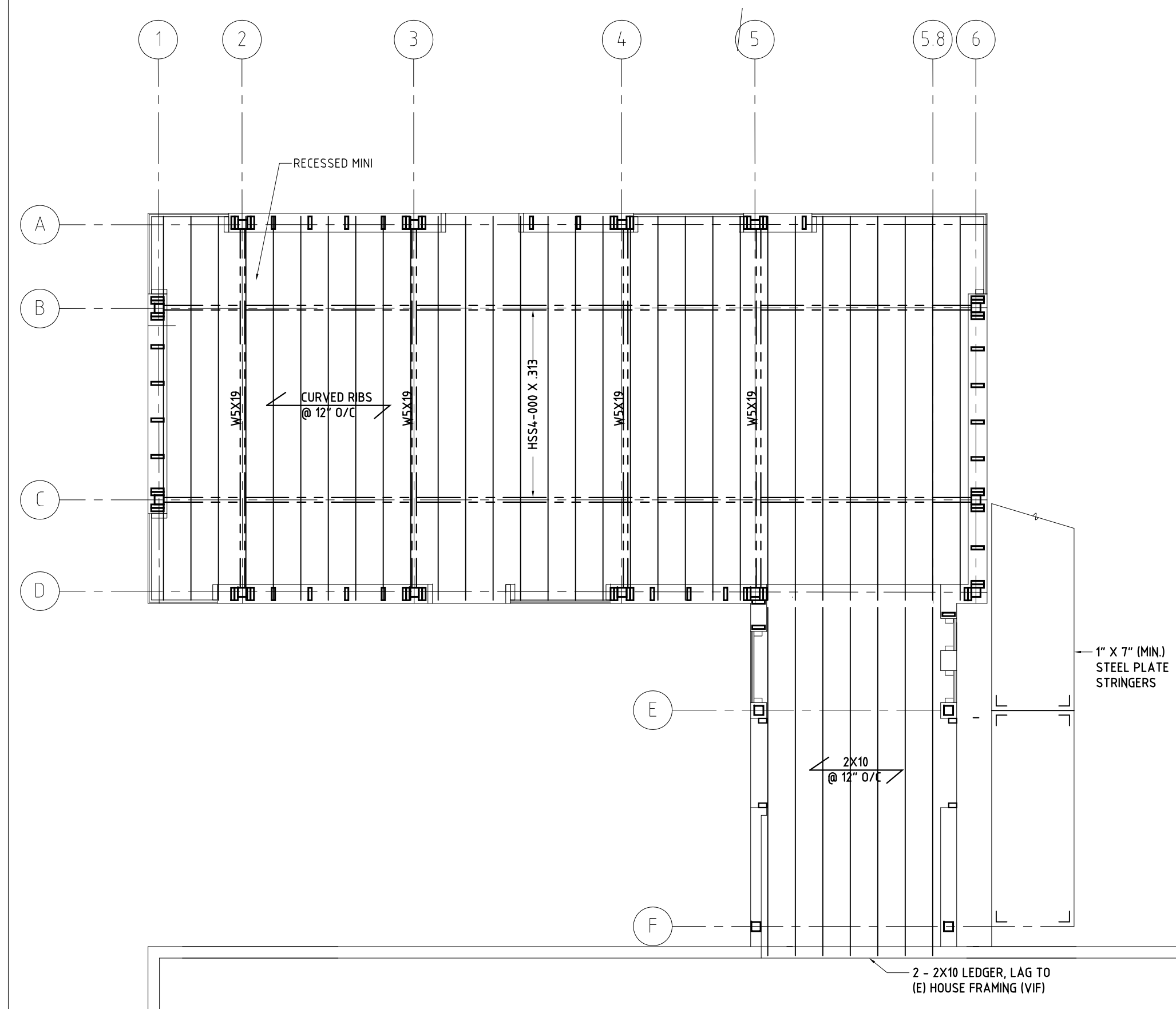


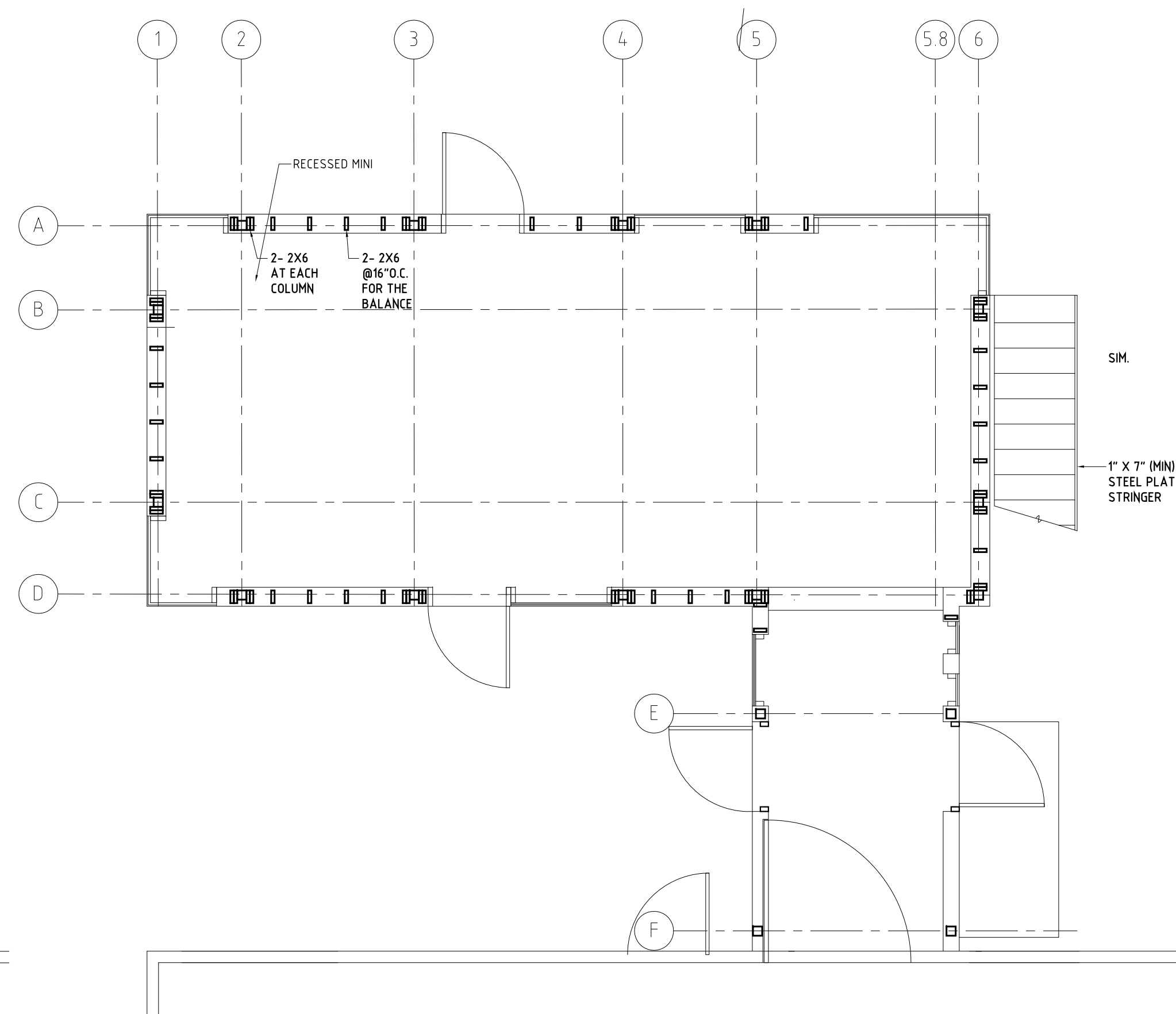
NOTE MS-1	$f_c = 3000$ psi
3" +/- THICK UNREINFORCED CONCRETE "MUD"-SLAB CAST ON GRADE	

FOUNDATION PLAN NOTES
 1. [0'-0"] ON PLAN INDICATE MINIMUM BOTTOM OF FOOTING, ELEVATION.
 2. [M.E.] ON PLAN INDICATE NEW BOTTOM OF FOOTING ELEVATION TO "MATCH EXISTING" BOTTOM OF FOOTING/WALL ELEVATION.

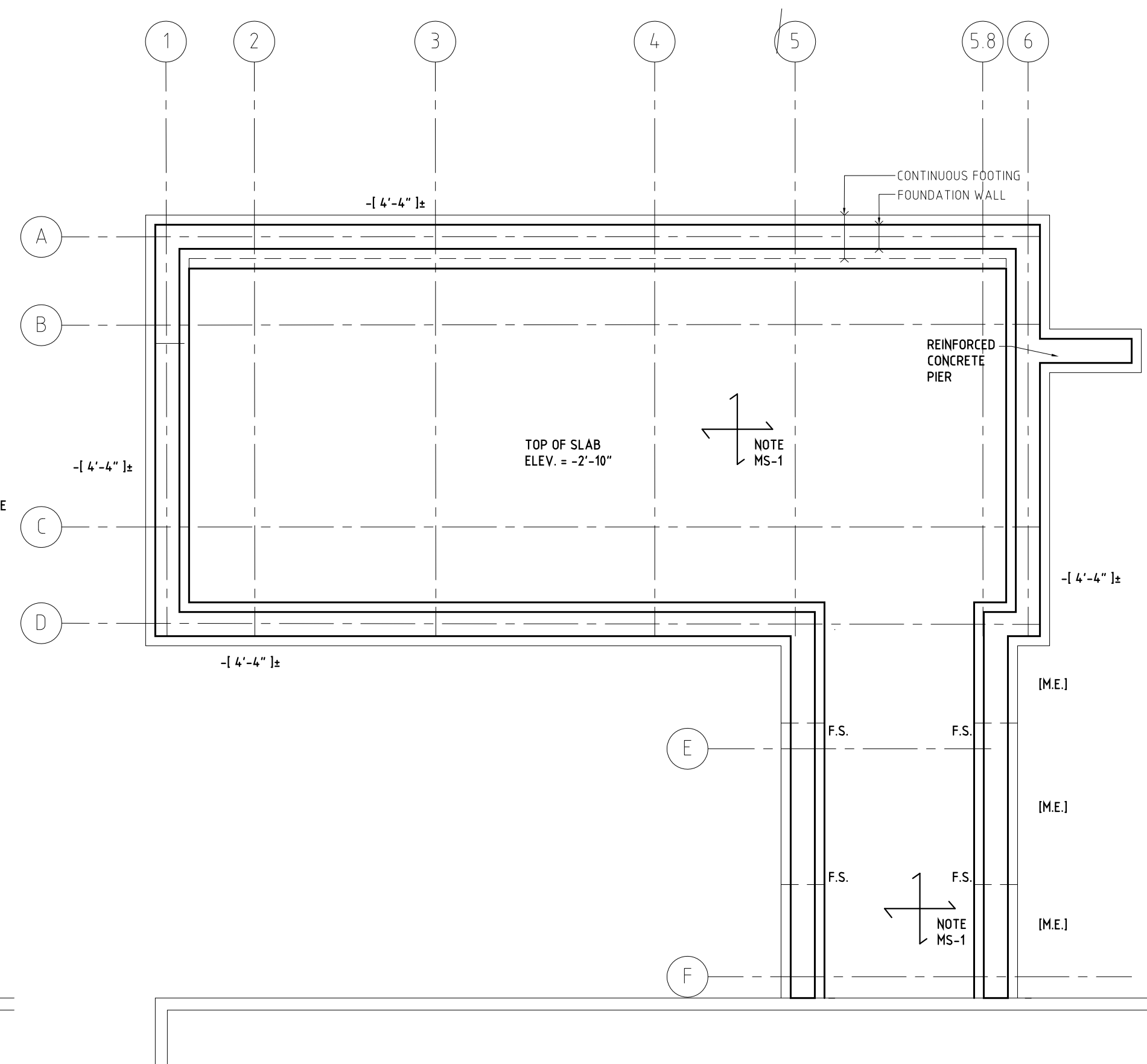
4 ROOF DECK RAILING POST PLAN
 1/4" = 1'



3 SECOND FLOOR AND LOW ROOF PLAN
 1/4" = 1'



2 BASEMENT PLAN
 1/4" = 1'



1 FOUNDATION PLAN
 1/4" = 1'